



# RUTHMANN T 330



IDEAL FOR

- Commercial building surveying
- Telecoms
- Window cleaning
- Bill posting
- General maintenance
- Highway maintenance

## SPECIFICATIONS

Specification	Metric	Imperial
<b>Working Height</b>	<b>33.00m</b>	<b>108ft 3in</b>
<b>Platform Height</b>	<b>31.00m</b>	<b>101ft 8in</b>
<b>Working Outreach @320kg SWL</b>	<b>16.90m</b>	<b>55ft 5in</b>
<b>Slew</b>	<b>500°</b>	
<b>Width</b>	<b>Travelling</b>	<b>2.50m</b> <b>8ft 3in</b>
	<b>Working</b>	<b>2.50m - 5.30m</b> <b>8ft 3in - 17ft 5in</b>
<b>Height (stowed)</b>	<b>3.56m</b>	<b>11ft 8in</b>
<b>Length</b>	<b>8.79m</b>	<b>28ft 10in</b>
<b>Gross Vehicle Weight</b>	<b>7,490kg</b>	<b>16,515lb</b>
<b>Platform Capacity</b>	<b>320kg</b>	<b>706lb</b>
<b>Platform Size</b>	<b>1.70m x 0.86m</b>	<b>65in x 33in</b>
<b>Outrigger Spreader Pad</b>	<b>0.50m x 0.50m x 0.05m</b>	<b>20in x 20in x 2in</b>

## FLOOR LOADINGS

Surface	Metric	Imperial
<b>Maximum Outrigger Pressure</b>	<b>792.08kN/m<sup>2</sup> - 8.08kg/cm<sup>2</sup></b>	<b>16542.93lb/ft<sup>2</sup></b>
<b>Max. Ground Pressure using Outrigger Spreader Pad</b>	<b>224kN/m<sup>2</sup> - 2.28kg/cm<sup>2</sup></b>	<b>4678.34 lb/ft<sup>2</sup></b>

## Quick & Easy Access Up to 27 Metres

### WHAT IS A MEWP?

MEWPs (Mobile Elevating Work Platforms), sometimes called mobile access platforms, offer an incredibly adaptable and flexible solution for various purposes. They can help you reach up to 27 metres, ideal for projects requiring great heights.

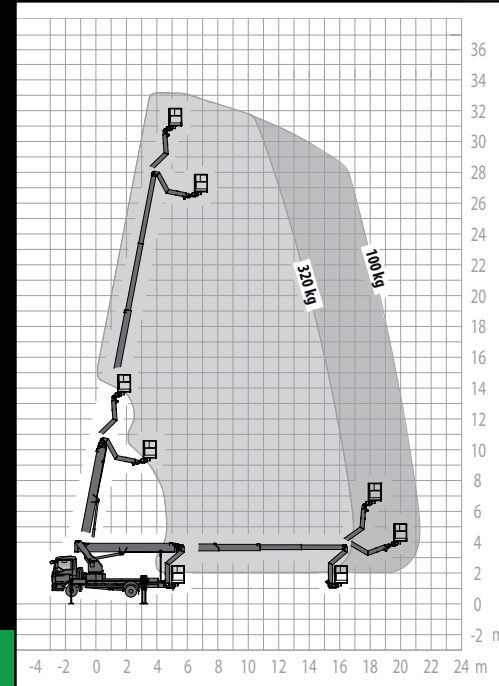
### WHY CHOOSE A MEWP?

- Building maintenance & roof repairs
- High-level lighting, electrics & CCTV work
- Sign installation & removal
- Event structure setup
- Tree surgery & dismantling
- Safe window cleaning at height

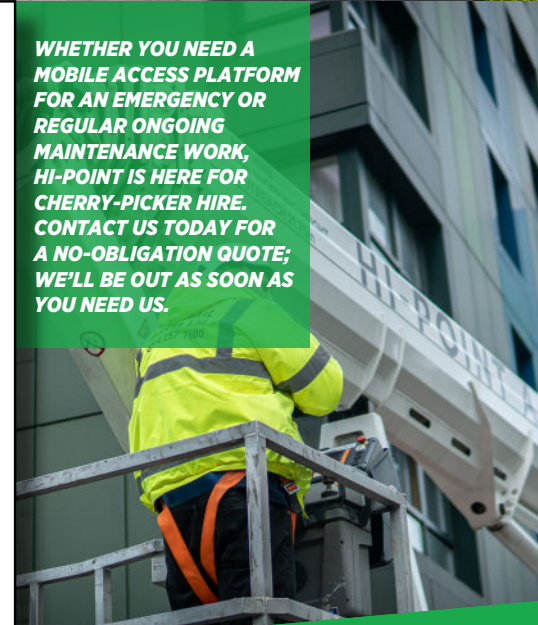
## SOLUTION



RUTHMANN T 330



**WHETHER YOU NEED A MOBILE ACCESS PLATFORM FOR AN EMERGENCY OR REGULAR ONGOING MAINTENANCE WORK, HI-POINT IS HERE FOR CHERRY-PICKER HIRE. CONTACT US TODAY FOR A NO-OBLIGATION QUOTE; WE'LL BE OUT AS SOON AS YOU NEED US.**



# 33m

Tel: 0114 257 7600  
Email: [info@hi-pointaccess.co.uk](mailto:info@hi-pointaccess.co.uk)

